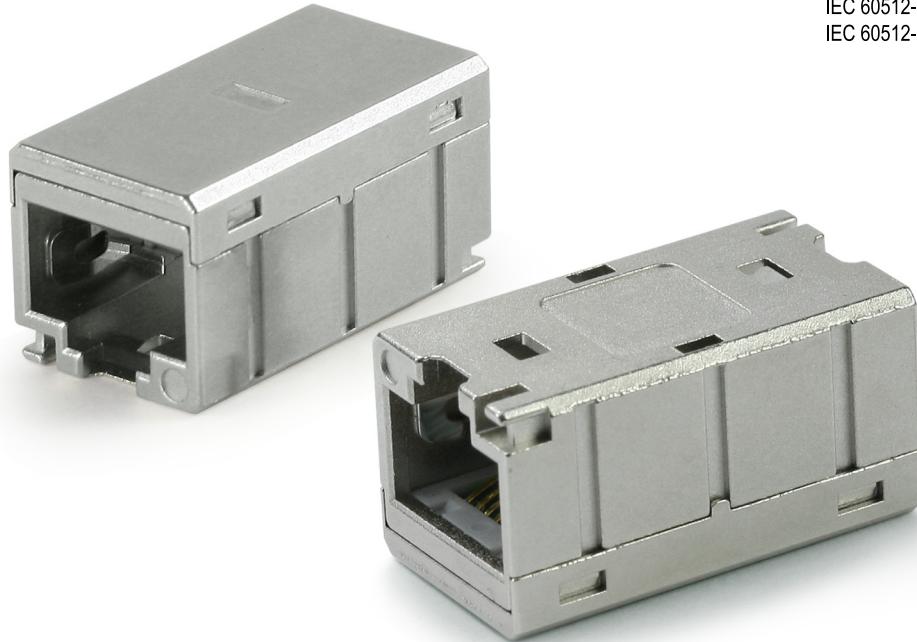




Class E_A/Cat.6A STP High Density Coupler TB39PX



IEC 60512-99-001:2012
IEC 60512-9-3:2011



Specification:

Qualified Screened Class E_A/Cat.6A Permanent Link & Channel
TIA-568.2-D
IEC60603-7-51
ISO/IEC11801 2.2 Edition
CENELEC EN 50173-1

Power over Ethernet:

PoE+ type I & II
IEEE 802.3at
IEC 60512-99-001 (2012-08)
IEC 60512-9-3 (2011-06)

Electrical:

Insulation Resistance: 500 Mohms minimum
Contact Resistance: 20 mohms maximum

Mechanical:

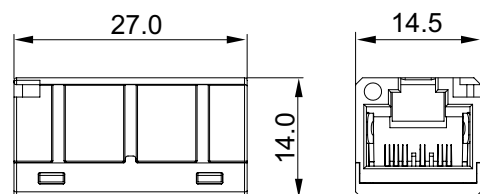
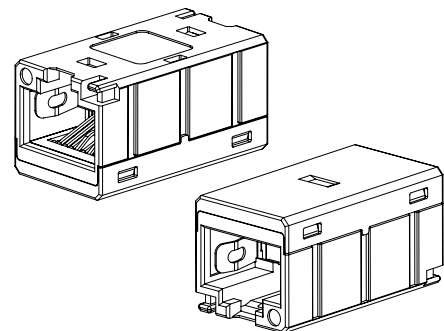
Plug Insertion Life: 750 Cycles minimum
Plug Retention Force: 20 lbs minimum
Temperature: -40°F to 150°F (-40°C to 68°C)

Physicals:

Housing & Cover: Die Casting
Contact wires: Phosphor Bronze gold over nickel plated

Application:

- Data Center
- Enterprise
- Industrial



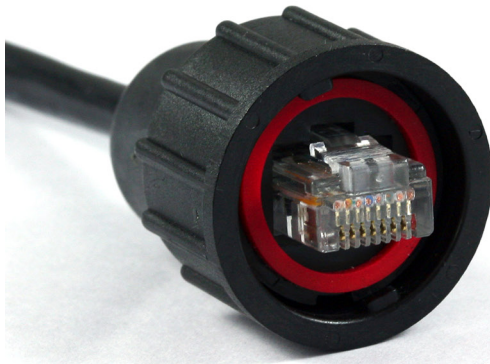


Class E_A/Cat.6A STP High Density Coupler

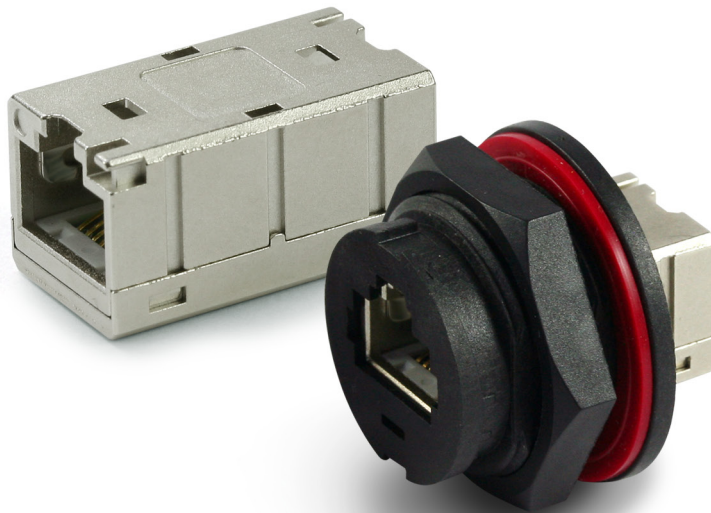
TB39PI-BK



IEC 60512-99-001:2012
IEC 60512-9-3:2011



TB39I2-xx



TB39I1-xx

Specification:

Qualified Screened Class E_A/Cat.6A Pemanent Link & Channel
TIA-568.2-D
IEC60603-7-51
ISO/IEC11801 2.2 Edition
CENELEC EN 50173-1

Power over Ethernet:

PoE+ type I & II
IEEE 802.3at
IEC 60512-99-001 (2012-08)
IEC 60512-9-3 (2011-06)

Electrical:

Insulation Resistance: 500 Mohms minimum
Contact Resistance: 20 mohms maximum

Mechanical:

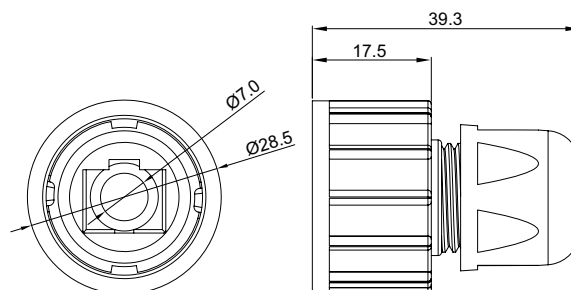
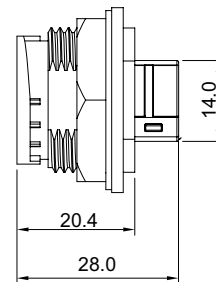
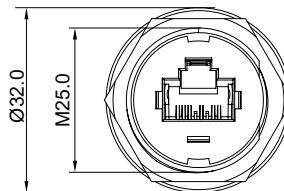
Plug Insertion Life: 750 Cycles minimum
IP67 Adapter & Nut: High impact flame retardant plastic
Plug Retention Force: 20 lbs minimum
Temperature: -40°F to 150°F (-40°C to 68°C)

Physicals:

Housing & Cover: Die Casting
Contact wires: Phosphor Bronze gold over nickel plated
O-ring: Rubber(NBR)

Application:

- IP67 Industrial





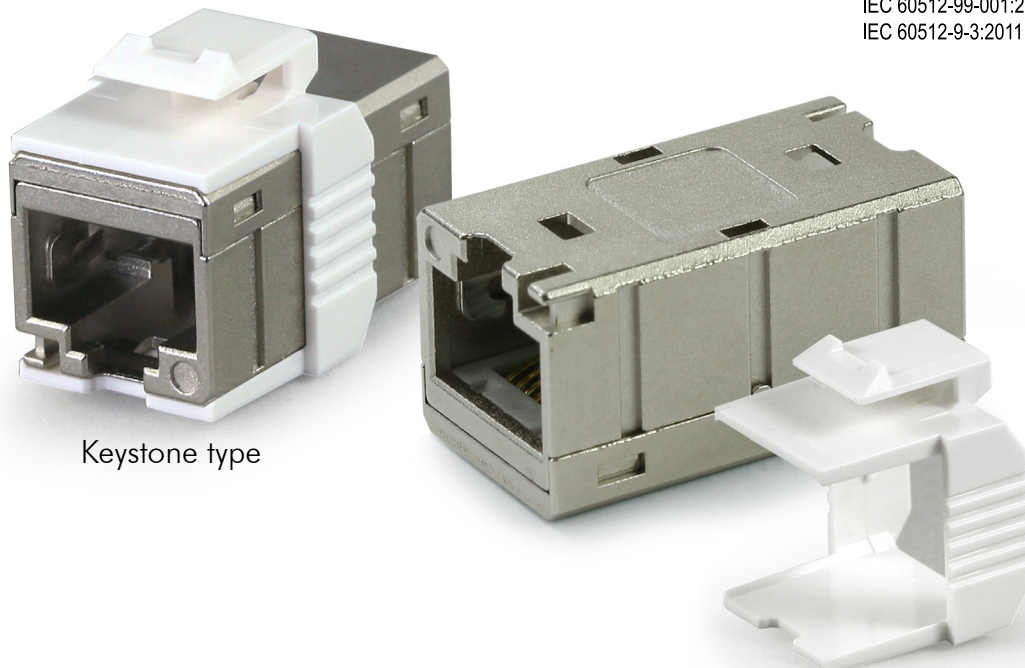
Class E_A/Cat.6A STP High Density Coupler

TB39PK-WH



IEC 60512-99-001:2012

IEC 60512-9-3:2011



Keystone type

TB39K1-xx

Specification:

Qualified Screened Class E_A/Cat.6A Pemanent Link & Channel
 TIA-568.2-D
 IEC60603-7-51
 ISO/IEC11801 2.2 Edition
 CENELEC EN 50173-1

Power over Ethernet:

PoE+ type I & II
 IEEE 802.3at
 IEC 60512-99-001 (2012-08)
 IEC 60512-9-3 (2011-06)

Electrical:

Insulation Resistance: 500 Mohms minimum
 Contact Resistance: 20 mohms maximum

Mechanical:

Plug Insertion Life: 750 Cycles minimum
 Plug Retention Force: 20 lbs minimum
 Temperature: -40°F to 150°F (-40°C to 68°C)

Physicals:

Housing & Cover: Die Casting
 Keystone Adaptor: High impact flame retardant plastic
 Contact wires: Phosphor Bronze gold over nickel plated

Application:

- Data Center
- Enterprise

